

State of Wyoming Corner Record

(In compliance with the *CORNER PERPETUATION AND FILING ACT*, Wyoming Statutes, 1997, Section 33-29-140, et. seq., and the Rules and Regulations of the Board of Registration for Professional Engineers and Professional Land Surveyors)

Reverse side of this form may be used if more space is needed.

Record of original survey and citation of source of historical information (if corner is lost or obliterated). Description of corner monumentation evidence found and/or monument and accessories established to perpetuate the location of this corner. Sketch of relative location of monument, accessories, and reference points with course and distance to adjacent corner(s) (if determined in this survey). Method and rationale for reestablishment of lost or obliterated corner.

G.L.O. Record: U.S. Deputy Surveyor, Henry G. Hay, September 3, 1870.; 80.00 Chains.....Set Granite Boulder 20 x 15 x 6 for corner to Sec's 22, 23, 26 & 27

Found: 24 ins. x 12 ins. x 7 ins. marked granite stone. Stone was marked with two chiseled grooves on the south face and two chiseled grooves on the east face.

Set: 2 ½ ins. diam. aluminum post, 30 ins. long, 27 ins. in the ground with a 3 ¼ ins. aluminum cap marked as noted below. Buried a 1 x 1 x 2 ins. orange fluorescent magnetic module in the bottom of the monument hole. Buried the original stone south as a memorial and raised a collar of stone around the monument. Set a 5 ft. steel fence post witness 1 ft. north.

Aluminum Cap Markings
T13N R67W

S22	S23
S27	S26

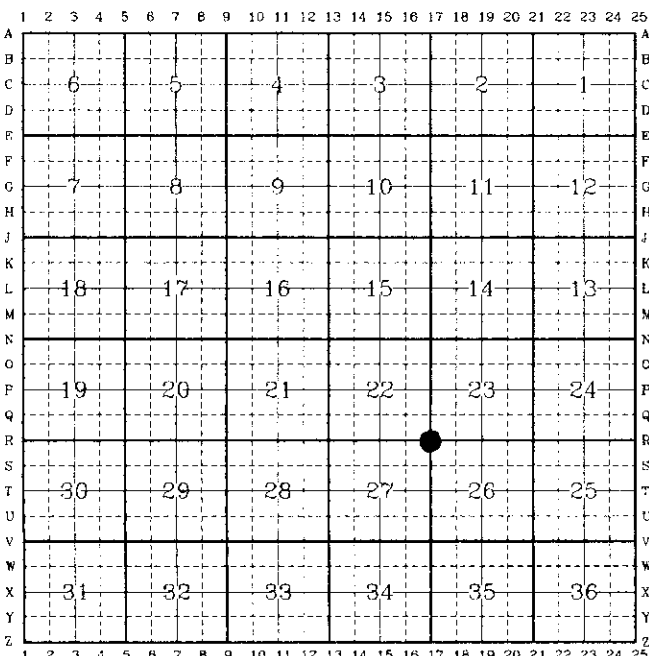
1999
P.L.S. 2927

See back of this sheet for measurements to other found or set monuments in the area.

Date of Field Work: Nov., 1998; Jan., 1999.

Office Reference: A.V.I. Job No. 2-2085C

CROSS INDEX DIAGRAM

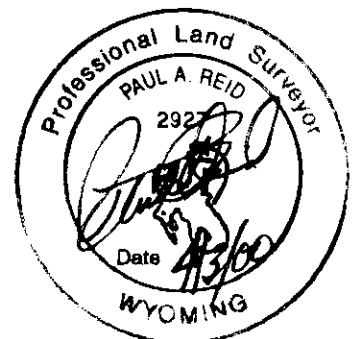


Firm/Agency, Address
 Paul A. Reid, P.L.S.
 A.V.I., p.c.
 2035 Westland Road
 Cheyenne, WY 82001

Telephone Number:
 (307) 637-6017

This corner record was prepared by me or under my direction and supervision.

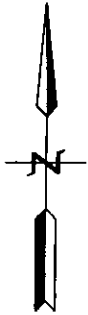
SEAL & SIGNATURE



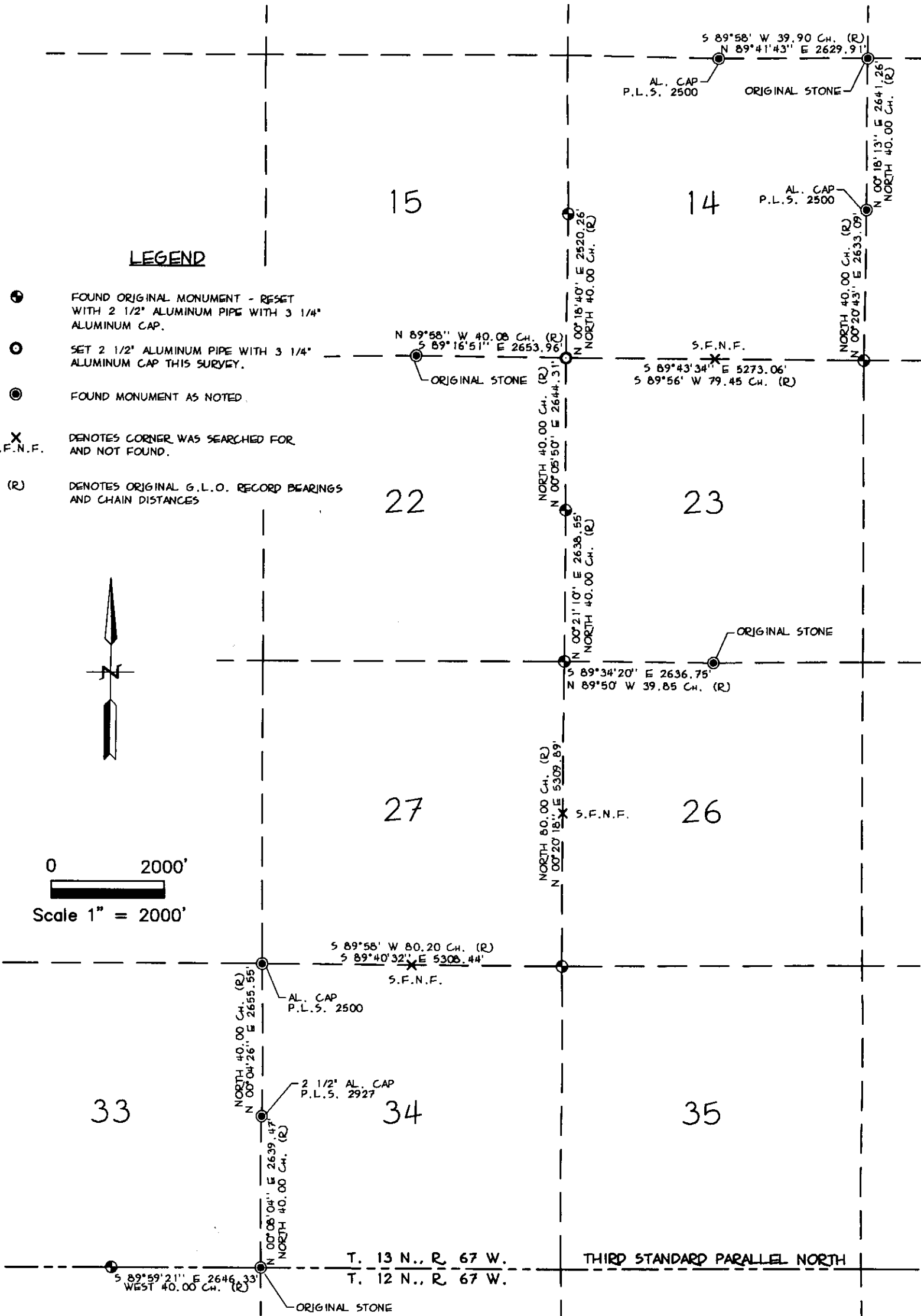
Corner Name: SW Section: 23 T.13N., R.67W.; 6th P.M. Cross-Index No.: R-17
 SBRPEPLS/PLSW: March 1994

LEGEND

- FOUND ORIGINAL MONUMENT - RESET WITH 2 1/2" ALUMINUM PIPE WITH 3 1/4" ALUMINUM CAP.
- SET 2 1/2" ALUMINUM PIPE WITH 3 1/4" ALUMINUM CAP THIS SURVEY.
- ⊙ FOUND MONUMENT AS NOTED.
- X DENOTES CORNER WAS SEARCHED FOR AND NOT FOUND.
- S.F.N.F.
- (R) DENOTES ORIGINAL G.L.O. RECORD BEARINGS AND CHAIN DISTANCES



0 2000'
 Scale 1" = 2000'



SKETCH OF SURVEY

T. 13 N., R. 67 W., 6TH P.M.
 LARAMIE COUNTY, WYOMING



RECORDED 4/03/2000 AT 2:11 PM REC# 271554 3K# 1550 PG# 1077

EBRA K. LATHROP, CLERK OF LARAMIE COUNTY, WY PAGE 2 OF 2